

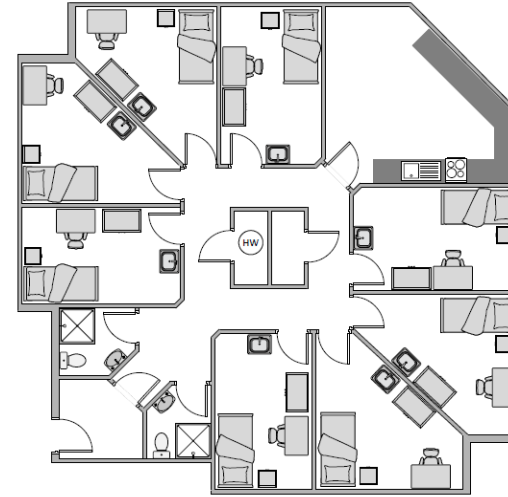


# Case Study

**Client:** Boston College  
**Project:** Student Accommodation Furniture  
**Project Date:** March 2021  
**Project Value:** Circa £15k

**Project Management Service including:**

- Tender process
- Consultations & advice
- Risk Assessments and Method Statements
- Standard & bespoke loose furniture



## Beautiful Halls of Residence loose furniture refurbishment for an established College in Boston.

Boston College is situated at the heart of the market town in Lincolnshire, with four campuses nearby, as well as college grounds located in Spalding.

After a comprehensive tender submission and client briefing, we provided a successful proposal to refurbish the purpose-built accommodation block where individual study bedrooms are arranged in flats, each accommodating 5-10 students, with shared kitchen and bathroom facilities.

Our brief was to specify a complete project-managed

solution that included the design, manufacture, and install of high-quality student furniture that would transform and enhance the current sleeping facilities into a modern environment for students to enjoy while studying at the college.

Following a full site survey and detailed analysis of our client specifications, we made recommendations to the original designs to ensure the student furniture was a perfect fit in every room.

### The Solution

We delivered comfortable tailor-made bedroom furniture solutions that support students with optimum durability and functionality. Each room features a stylish 2 door wardrobe with a convenient hanging rail, bedside cabinet with a lockable drawer, study desk complete with storage pedestal, and a student swivel

chair. The furniture is all manufactured with 25mm board as a minimum, and chair fabrics were upgraded from fabric to a Crib 5 vinyl to provide an everyday anti-microbial solution that is more resilient to damage and easy to clean.

All wooden furniture was supplied in a tranquil grey finish with co-ordinating handles chosen for their neutral soft tones that promotes a sense of calm, along with Gun Metal vinyl, from the Just Colour Chieftain range for the seating to complete the multi-purpose environment.

To meet the fulfilment needs of the College, we received the order to refurbish 22 bedrooms and fast-tracked the delivery and installation to all within a 4-week turn-around.